

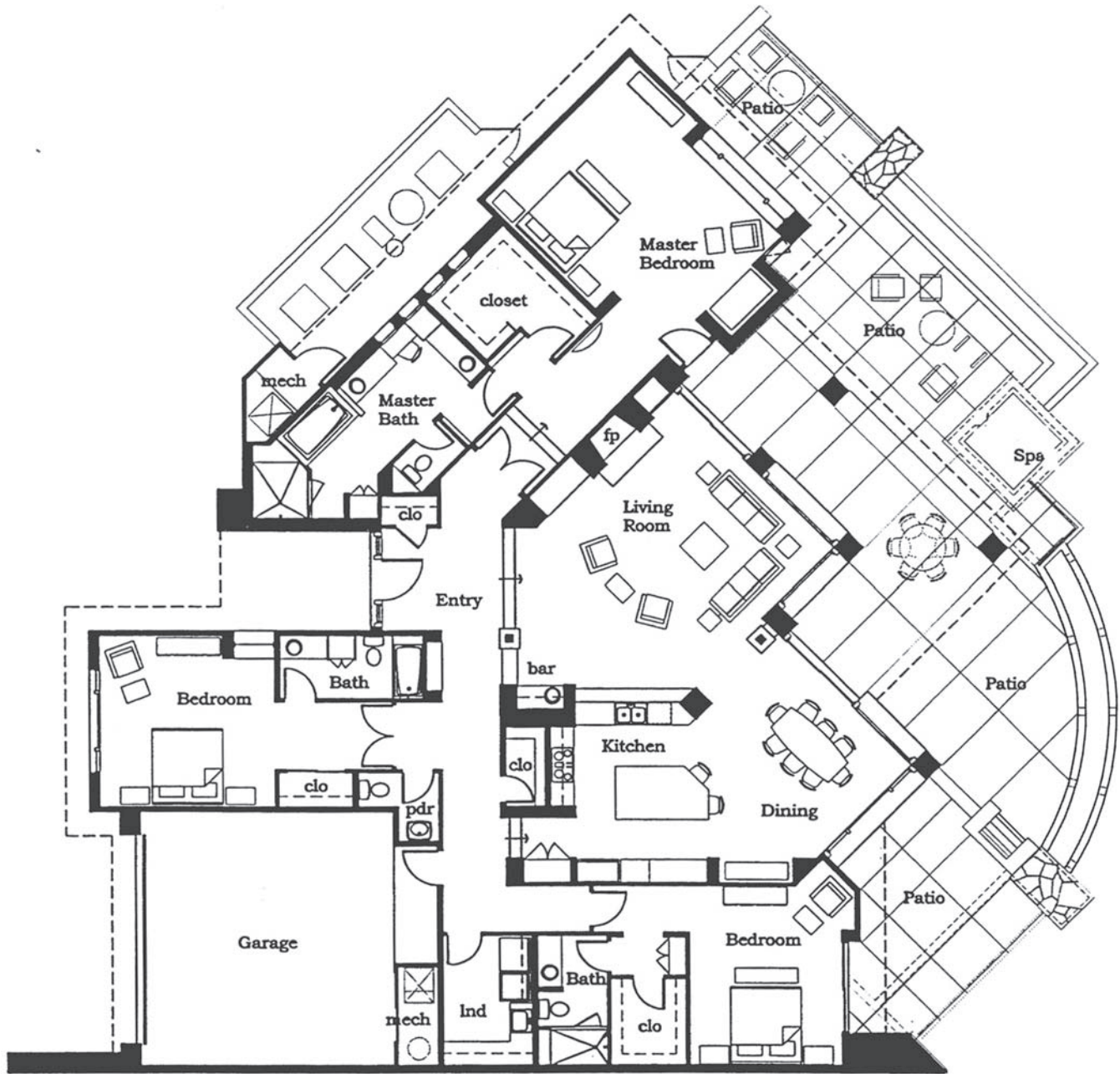


Linda Salkow 480.620.3511

www.DesertMountainLifestyle.com • LSalkow@aol.com

Village of Lookout Ridge

Verbena Floorplan



Arizona Properties

28190 N. Alma School Rd., Suite # 111 • Scottsdale, AZ 85262



© 2012 BRER Affiliates Inc. An independently owned and operated broker member of BRER Affiliates Inc. Prudential, the Prudential logo and the Rock symbol are registered service marks of Prudential Financial, Inc. and its related entities, registered in many jurisdictions worldwide. Used under license with no other affiliation with Prudential. Equal Housing Opportunity.